

**DK ADVARSEL**  
 Dette modul er beregnet for tilslutning til livsfarlige elektriske spændinger. Hvis denne advarsel ignoreres, kan det føre til alvorlig legemsbeskadigelse eller mekanisk ødelæggelse.  
 For at undgå faren for elektriske stød og brand skal sikkerhedsreglerne overholdes, og vejledningerne skal følges.  
 Specifikationer må ikke overskrides, og modulet må kun benyttes som beskrevet i det følgende.  
 Installationsvejledningen skal studeres omhyggeligt, før modulet tages i brug. Kun kvalificeret personale (teknikere) må installere dette modul. Hvis modulet ikke benyttes som beskrevet i denne installationsvejledning, så forringes modulets beskyttelsesforanstaltninger.

**ADVARSEL**  
 Der må ikke tilsluttes farlig spænding til modulet, før dette er fastmonteret, og følgende operationer bør kun udføres på modulet i spændingsløs tilstand og under ESD-sikre forhold.  
 Installation, ledningsmontage og -demontage.  
 Fejlfinding på modulet.  
 Reparation af modulet og udskiftning af sikringer må kun foretages af Red Lion.

**ADVARSEL**  
 Moduets frontplade må ikke åbnes, da dette vil medføre skade på stikforbindelsen til display-/programmeringsfronten PGM. Modulet indeholder ingen DIP-switch'e eller jumbere. Til modulet skal monteres på DIN-skinne efter DIN 60715.

#### SIKKERHEDSREGLER

**Motagelse og udpakning**  
 Udpak modulet uden at beskadige det. Kontrollér ved motagelsen, at modulyten svarer til den bestilte. Indpakningen bør følge modulet, indtil dette er monteret på blivende plads.

**Miljøforhold**  
 Undgå direkte sollys, kraftigt støv eller varme, mekaniske rystelser og stød, og udsæt ikke modulet for regn eller kraftig fugt. Om nødvendigt skal opvarmning, ud over de opgivne grænser for omgivelsestemperatur, forhindres ved hjælp af ventilation. Alle moduler kan anvendes i Måle- / overspændings-kategori II og Forureningsgrad 2. Modulerne er designet til at være sikker mindst op til en højde af 2000 m.

**Installation**  
 Modulet må kun tilsluttes af kvalificerede teknikere, som er bekendte med de tekniske udtryk, advarsler og instruktioner i installationsvejledningen, og som vil følge disse. Hvis der er tvivl om modulets rette håndtering, skal der rettes henvendelse til den lokale forhandler eller alternativt direkte til **Red Lion**.

Installation og tilslutning af modulet skal følge landets gældende regler for installation af elektrisk materiel bl.a. med hensyn til ledningsværnsnit, for-sikring og placering. Beskrivelse af indgang / udgang og forsyningsforbindelser findes i installationsvejledningen og på sideskiltet.

For moduler, som er permanent tilsluttet farlig spænding, gælder:

For-sikringens maksimale størrelse er 10 A, og den skal sammen med en afbryder placeres let tilgængeligt og tæt ved modulet. Afbryderen skal mærkes således, at der ikke er tvivl om, at den afbryder spændingen på modulet.

**UL-installationskrav**  
 Brug kun 60/75°C kobberledninger.  
 Må kun anvendes i forureningsgrad 2 eller bedre.  
 Max. omgivelsestemperatur ..... 60°C  
 Max. ledningskvadrat ..... AWG 26-14  
 UL fil-nummer, IAMS & AFCM ..... E324843

**Kalibrering og justering**  
 For kalibrering og justering skal måling og tilslutning af eksterne spændinger udføres i henhold til denne installationsvejledning, og teknikeren skal benytte sikkerhedsmæssigt korrekte værktøjer og instrumenter.

**Betjening under normal drift**  
 Operatører må kun indstille eller betjene modulerne, når disse er fast installeret på forsvarelig måde i tavler el. lignende, så betjeningen ikke medfører fare for liv eller materiel. Dvs., at der ikke er berøringsfare, og at modulet er placeret, så det er let at betjene.

**Renngøring**  
 Modulet må, i spændingsløs tilstand, rengøres med en klud let fugtet med destilleret vand.

**Elektriske specifikationer**  
 Anvendelses temperatur ..... -20 til +60°C  
 Opbevaringstemperatur ..... -20°C to +85°C  
 Forsyningsspænding, universel ..... 21,6..253 VAC, 50..60 Hz eller 19,2..300 VDC

Max. forbrug:  
 IAMS002, IAMS0020 ..... ≤ 2,0 W  
 IAMS0022, AFCM0001 ..... ≤ 2,5 W  
 Max. effekttab:  
 IAMS002, IAMS0020 ..... ≤ 2,0 W  
 IAMS0022, AFCM0001 ..... ≤ 2,5 W

Sikring ..... 400 mA T / 250 VAC  
 Isolationsspænding, test / drift ..... 2,3 kVAC / 250 VAC (forstærket isolation)  
 EMC-immunitetspåvirkning ..... < ±0,5% af span

Udvædet EMC-immunitet:  
 NAMUR NE Z1, A, krit, gniststøj < ±1% af span  
 Ledningsbåren emission, klasse A (4184) ..... 150 kHz..10 MHz  
 Relativ luftfugtighed ..... < 95% RH (ikke kond.)

Mål, med displayfront PGM (HxWxD) ..... 109 x 23,5 x 116/131 mm  
 Kapslingsklasse ..... IP20

**Overholdte myndighedskrav:**  
 EMC ..... 2014/30/EU  
 LVD ..... 2014/35/EU  
 RoHS ..... 2011/65/EU

**Electrical specifications**  
 Temperature range ..... -20°C to +60°C  
 Storage temperature ..... -20°C to +85°C  
 Supply voltage, universal ..... 21,6..253 VAC, 50..60 Hz or 19,2..300 VDC

Max. required power:  
 IAMS002, IAMS0020 ..... ≤ 2,0 W  
 IAMS0022, AFCM0001 ..... ≤ 2,5 W  
 Max. power dissipation:  
 IAMS002, IAMS0020 ..... ≤ 2,0 W  
 IAMS0022, AFCM0001 ..... ≤ 2,5 W

Fuse ..... 400 mA SB / 250 VAC  
 Isolation voltage, test / operation ..... 2,3 kVAC / 250 VAC (reinforced isolation)  
 EMC immunity influence ..... < ±0,5% of span  
 Extended EMC immunity:  
 NAMUR NE Z1, A, criterion, burst. < ±1% of span  
 Conducted emission, class A (4184) ..... 150 kHz..10 MHz  
 Relative humidity ..... < 95% RH (non-cond.)  
 Dimensions (HxWxD) ..... 109 x 23,5 x 104 mm  
 Dimensions (HxWxD) w/ PGM ..... 109 x 23,5 x 116/131 mm  
 Protection degree ..... IP20

**Observed authority requirements:**  
 EMC ..... 2014/30/EU  
 LVD ..... 2014/35/EU  
 RoHS ..... 2011/65/EU

**Electrical specifications**  
 Temperature range ..... -20°C to +60°C  
 Storage temperature ..... -20°C to +85°C  
 Supply voltage, universal ..... 21,6..253 VAC, 50..60 Hz or 19,2..300 VDC

Max. required power:  
 IAMS002, IAMS0020 ..... ≤ 2,0 W  
 IAMS0022, AFCM0001 ..... ≤ 2,5 W  
 Max. power dissipation:  
 IAMS002, IAMS0020 ..... ≤ 2,0 W  
 IAMS0022, AFCM0001 ..... ≤ 2,5 W

Fuse ..... 400 mA SB / 250 VAC  
 Isolation voltage, test / operation ..... 2,3 kVAC / 250 VAC (reinforced isolation)  
 EMC immunity influence ..... < ±0,5% of span  
 Extended EMC immunity:  
 NAMUR NE Z1, A, criterion, burst. < ±1% of span  
 Conducted emission, class A (4184) ..... 150 kHz..10 MHz  
 Relative humidity ..... < 95% RH (non-cond.)  
 Dimensions (HxWxD) ..... 109 x 23,5 x 104 mm  
 Dimensions (HxWxD) w/ PGM ..... 109 x 23,5 x 116/131 mm  
 Protection degree ..... IP20

**Observed authority requirements:**  
 EMC ..... 2014/30/EU  
 LVD ..... 2014/35/EU  
 RoHS ..... 2011/65/EU

**Electrical specifications**  
 Temperature range ..... -20°C to +60°C  
 Storage temperature ..... -20°C to +85°C  
 Supply voltage, universal ..... 21,6..253 VAC, 50..60 Hz or 19,2..300 VDC

Max. required power:  
 IAMS002, IAMS0020 ..... ≤ 2,0 W  
 IAMS0022, AFCM0001 ..... ≤ 2,5 W  
 Max. power dissipation:  
 IAMS002, IAMS0020 ..... ≤ 2,0 W  
 IAMS0022, AFCM0001 ..... ≤ 2,5 W

Fuse ..... 400 mA SB / 250 VAC  
 Isolation voltage, test / operation ..... 2,3 kVAC / 250 VAC (reinforced isolation)  
 EMC immunity influence ..... < ±0,5% of span  
 Extended EMC immunity:  
 NAMUR NE Z1, A, criterion, burst. < ±1% of span  
 Conducted emission, class A (4184) ..... 150 kHz..10 MHz  
 Relative humidity ..... < 95% RH (non-cond.)  
 Dimensions (HxWxD) ..... 109 x 23,5 x 104 mm  
 Dimensions (HxWxD) w/ PGM ..... 109 x 23,5 x 116/131 mm  
 Protection degree ..... IP20

**Observed authority requirements:**  
 EMC ..... 2014/30/EU  
 LVD ..... 2014/35/EU  
 RoHS ..... 2011/65/EU

**Electrical specifications**  
 Temperature range ..... -20°C to +60°C  
 Storage temperature ..... -20°C to +85°C  
 Supply voltage, universal ..... 21,6..253 VAC, 50..60 Hz or 19,2..300 VDC

Max. required power:  
 IAMS002, IAMS0020 ..... ≤ 2,0 W  
 IAMS0022, AFCM0001 ..... ≤ 2,5 W  
 Max. power dissipation:  
 IAMS002, IAMS0020 ..... ≤ 2,0 W  
 IAMS0022, AFCM0001 ..... ≤ 2,5 W

Fuse ..... 400 mA SB / 250 VAC  
 Isolation voltage, test / operation ..... 2,3 kVAC / 250 VAC (reinforced isolation)  
 EMC immunity influence ..... < ±0,5% of span  
 Extended EMC immunity:  
 NAMUR NE Z1, A, criterion, burst. < ±1% of span  
 Conducted emission, class A (4184) ..... 150 kHz..10 MHz  
 Relative humidity ..... < 95% RH (non-cond.)  
 Dimensions (HxWxD) ..... 109 x 23,5 x 104 mm  
 Dimensions (HxWxD) w/ PGM ..... 109 x 23,5 x 116/131 mm  
 Protection degree ..... IP20

**Observed authority requirements:**  
 EMC ..... 2014/30/EU  
 LVD ..... 2014/35/EU  
 RoHS ..... 2011/65/EU

**Electrical specifications**  
 Temperature range ..... -20°C to +60°C  
 Storage temperature ..... -20°C to +85°C  
 Supply voltage, universal ..... 21,6..253 VAC, 50..60 Hz or 19,2..300 VDC

Max. required power:  
 IAMS002, IAMS0020 ..... ≤ 2,0 W  
 IAMS0022, AFCM0001 ..... ≤ 2,5 W  
 Max. power dissipation:  
 IAMS002, IAMS0020 ..... ≤ 2,0 W  
 IAMS0022, AFCM0001 ..... ≤ 2,5 W

Fuse ..... 400 mA SB / 250 VAC  
 Isolation voltage, test / operation ..... 2,3 kVAC / 250 VAC (reinforced isolation)  
 EMC immunity influence ..... < ±0,5% of span  
 Extended EMC immunity:  
 NAMUR NE Z1, A, criterion, burst. < ±1% of span  
 Conducted emission, class A (4184) ..... 150 kHz..10 MHz  
 Relative humidity ..... < 95% RH (non-cond.)  
 Dimensions (HxWxD) ..... 109 x 23,5 x 104 mm  
 Dimensions (HxWxD) w/ PGM ..... 109 x 23,5 x 116/131 mm  
 Protection degree ..... IP20

**Observed authority requirements:**  
 EMC ..... 2014/30/EU  
 LVD ..... 2014/35/EU  
 RoHS ..... 2011/65/EU

**Electrical specifications**  
 Temperature range ..... -20°C to +60°C  
 Storage temperature ..... -20°C to +85°C  
 Supply voltage, universal ..... 21,6..253 VAC, 50..60 Hz or 19,2..300 VDC

Max. required power:  
 IAMS002, IAMS0020 ..... ≤ 2,0 W  
 IAMS0022, AFCM0001 ..... ≤ 2,5 W  
 Max. power dissipation:  
 IAMS002, IAMS0020 ..... ≤ 2,0 W  
 IAMS0022, AFCM0001 ..... ≤ 2,5 W

Fuse ..... 400 mA SB / 250 VAC  
 Isolation voltage, test / operation ..... 2,3 kVAC / 250 VAC (reinforced isolation)  
 EMC immunity influence ..... < ±0,5% of span  
 Extended EMC immunity:  
 NAMUR NE Z1, A, criterion, burst. < ±1% of span  
 Conducted emission, class A (4184) ..... 150 kHz..10 MHz  
 Relative humidity ..... < 95% RH (non-cond.)  
 Dimensions (HxWxD) ..... 109 x 23,5 x 104 mm  
 Dimensions (HxWxD) w/ PGM ..... 109 x 23,5 x 116/131 mm  
 Protection degree ..... IP20

**Observed authority requirements:**  
 EMC ..... 2014/30/EU  
 LVD ..... 2014/35/EU  
 RoHS ..... 2011/65/EU

**Electrical specifications**  
 Temperature range ..... -20°C to +60°C  
 Storage temperature ..... -20°C to +85°C  
 Supply voltage, universal ..... 21,6..253 VAC, 50..60 Hz or 19,2..300 VDC

Max. required power:  
 IAMS002, IAMS0020 ..... ≤ 2,0 W  
 IAMS0022, AFCM0001 ..... ≤ 2,5 W  
 Max. power dissipation:  
 IAMS002, IAMS0020 ..... ≤ 2,0 W  
 IAMS0022, AFCM0001 ..... ≤ 2,5 W

Fuse ..... 400 mA SB / 250 VAC  
 Isolation voltage, test / operation ..... 2,3 kVAC / 250 VAC (reinforced isolation)  
 EMC immunity influence ..... < ±0,5% of span  
 Extended EMC immunity:  
 NAMUR NE Z1, A, criterion, burst. < ±1% of span  
 Conducted emission, class A (4184) ..... 150 kHz..10 MHz  
 Relative humidity ..... < 95% RH (non-cond.)  
 Dimensions (HxWxD) ..... 109 x 23,5 x 104 mm  
 Dimensions (HxWxD) w/ PGM ..... 109 x 23,5 x 116/131 mm  
 Protection degree ..... IP20

**Observed authority requirements:**  
 EMC ..... 2014/30/EU  
 LVD ..... 2014/35/EU  
 RoHS ..... 2011/65/EU

**Electrical specifications**  
 Temperature range ..... -20°C to +60°C  
 Storage temperature ..... -20°C to +85°C  
 Supply voltage, universal ..... 21,6..253 VAC, 50..60 Hz or 19,2..300 VDC

Max. required power:  
 IAMS002, IAMS0020 ..... ≤ 2,0 W  
 IAMS0022, AFCM0001 ..... ≤ 2,5 W  
 Max. power dissipation:  
 IAMS002, IAMS0020 ..... ≤ 2,0 W  
 IAMS0022, AFCM0001 ..... ≤ 2,5 W

Fuse ..... 400 mA SB / 250 VAC  
 Isolation voltage, test / operation ..... 2,3 kVAC / 250 VAC (reinforced isolation)  
 EMC immunity influence ..... < ±0,5% of span  
 Extended EMC immunity:  
 NAMUR NE Z1, A, criterion, burst. < ±1% of span  
 Conducted emission, class A (4184) ..... 150 kHz..10 MHz  
 Relative humidity ..... < 95% RH (non-cond.)  
 Dimensions (HxWxD) ..... 109 x 23,5 x 104 mm  
 Dimensions (HxWxD) w/ PGM ..... 109 x 23,5 x 116/131 mm  
 Protection degree ..... IP20

**Observed authority requirements:**  
 EMC ..... 2014/30/EU  
 LVD ..... 2014/35/EU  
 RoHS ..... 2011/65/EU

**Electrical specifications**  
 Temperature range ..... -20°C to +60°C  
 Storage temperature ..... -20°C to +85°C  
 Supply voltage, universal ..... 21,6..253 VAC, 50..60 Hz or 19,2..300 VDC

Max. required power:  
 IAMS002, IAMS0020 ..... ≤ 2,0 W  
 IAMS0022, AFCM0001 ..... ≤ 2,5 W  
 Max. power dissipation:  
 IAMS002, IAMS0020 ..... ≤ 2,0 W  
 IAMS0022, AFCM0001 ..... ≤ 2,5 W

Fuse ..... 400 mA SB / 250 VAC  
 Isolation voltage, test / operation ..... 2,3 kVAC / 250 VAC (reinforced isolation)  
 EMC immunity influence ..... < ±0,5% of span  
 Extended EMC immunity:  
 NAMUR NE Z1, A, criterion, burst. < ±1% of span  
 Conducted emission, class A (4184) ..... 150 kHz..10 MHz  
 Relative humidity ..... < 95% RH (non-cond.)  
 Dimensions (HxWxD) ..... 109 x 23,5 x 104 mm  
 Dimensions (HxWxD) w/ PGM ..... 109 x 23,5 x 116/131 mm  
 Protection degree ..... IP20

**Observed authority requirements:**  
 EMC ..... 2014/30/EU  
 LVD ..... 2014/35/EU  
 RoHS ..... 2011/65/EU

**Electrical specifications**  
 Temperature range ..... -20°C to +60°C  
 Storage temperature ..... -20°C to +85°C  
 Supply voltage, universal ..... 21,6..253 VAC, 50..60 Hz or 19,2..300 VDC

Max. required power:  
 IAMS002, IAMS0020 ..... ≤ 2,0 W  
 IAMS0022, AFCM0001 ..... ≤ 2,5 W  
 Max. power dissipation:  
 IAMS002, IAMS0020 ..... ≤ 2,0 W  
 IAMS0022, AFCM0001 ..... ≤ 2,5 W

Fuse ..... 400 mA SB / 250 VAC  
 Isolation voltage, test / operation ..... 2,3 kVAC / 250 VAC (reinforced isolation)  
 EMC immunity influence ..... < ±0,5% of span  
 Extended EMC immunity:  
 NAMUR NE Z1, A, criterion, burst. < ±1% of span  
 Conducted emission, class A (4184) ..... 150 kHz..10 MHz  
 Relative humidity ..... < 95% RH (non-cond.)  
 Dimensions (HxWxD) ..... 109 x 23,5 x 104 mm  
 Dimensions (HxWxD) w/ PGM ..... 109 x 23,5 x 116/131 mm  
 Protection degree ..... IP20

**Observed authority requirements:**  
 EMC ..... 2014/30/EU  
 LVD ..... 2014/35/EU  
 RoHS ..... 2011/65/EU

**Electrical specifications**  
 Temperature range ..... -20°C to +60°C  
 Storage temperature ..... -20°C to +85°C  
 Supply voltage, universal ..... 21,6..253 VAC, 50..60 Hz or 19,2..300 VDC

Max. required power:  
 IAMS002, IAMS0020 ..... ≤ 2,0 W  
 IAMS0022, AFCM0001 ..... ≤ 2,5 W  
 Max. power dissipation:  
 IAMS002, IAMS0020 ..... ≤ 2,0 W  
 IAMS0022, AFCM0001 ..... ≤ 2,5 W

Fuse ..... 400 mA SB / 250 VAC  
 Isolation voltage, test / operation ..... 2,3 kVAC / 250 VAC (reinforced isolation)  
 EMC immunity influence ..... < ±0,5% of span  
 Extended EMC immunity:  
 NAMUR NE Z1, A, criterion, burst. < ±1% of span  
 Conducted emission, class A (4184) ..... 150 kHz..10 MHz  
 Relative humidity ..... < 95% RH (non-cond.)  
 Dimensions (HxWxD) ..... 109 x 23,5 x 104 mm  
 Dimensions (HxWxD) w/ PGM ..... 109 x 23,5 x 116/131 mm  
 Protection degree ..... IP20

**Observed authority requirements:**  
 EMC ..... 2014/30/EU  
 LVD ..... 2014/35/EU  
 RoHS ..... 2011/65/EU

**Electrical specifications**  
 Temperature range ..... -20°C to +60°C  
 Storage temperature ..... -20°C to +85°C  
 Supply voltage, universal ..... 21,6..253 VAC, 50..60 Hz or 19,2..300 VDC

Max. required power:  
 IAMS002, IAMS0020 ..... ≤ 2,0 W  
 IAMS0022, AFCM0001 ..... ≤ 2,5 W  
 Max. power dissipation:  
 IAMS002, IAMS0020 ..... ≤ 2,0 W  
 IAMS0022, AFCM0001 ..... ≤ 2,5 W

Fuse ..... 400 mA SB / 250 VAC  
 Isolation voltage, test / operation ..... 2,3 kVAC / 250 VAC (reinforced isolation)  
 EMC immunity influence ..... < ±0,5% of span  
 Extended EMC immunity:  
 NAMUR NE Z1, A, criterion, burst. < ±1% of span  
 Conducted emission, class A (4184) ..... 150 kHz..10 MHz  
 Relative humidity ..... < 95% RH (non-cond.)  
 Dimensions (HxWxD) ..... 109 x 23,5 x 104 mm  
 Dimensions (HxWxD) w/ PGM ..... 109 x 23,5 x 116/131 mm  
 Protection degree ..... IP20

**Observed authority requirements:**  
 EMC ..... 2014/30/EU  
 LVD ..... 2014/35/EU  
 RoHS ..... 2011/65/EU

**Electrical specifications**  
 Temperature range ..... -20°C to +60°C  
 Storage temperature ..... -20°C to +85°C  
 Supply voltage, universal ..... 21,6..253 VAC, 50..60 Hz or 19,2..300 VDC

Max. required power:  
 IAMS002, IAMS0020 ..... ≤ 2,0 W  
 IAMS0022, AFCM0001 ..... ≤ 2,5 W  
 Max. power dissipation:  
 IAMS002, IAMS0020 ..... ≤ 2,0 W  
 IAMS0022, AFCM0001 ..... ≤ 2,5 W

Fuse ..... 400 mA SB / 250 VAC  
 Isolation voltage, test / operation ..... 2,3 kVAC / 250 VAC (reinforced isolation)  
 EMC immunity influence ..... < ±0,5% of span  
 Extended EMC immunity:  
 NAMUR NE Z1, A, criterion, burst. < ±1% of span  
 Conducted emission, class A (4184) ..... 150 kHz..10 MHz  
 Relative humidity ..... < 95% RH (non-cond.)  
 Dimensions (HxWxD) ..... 109 x 23,5 x 104 mm  
 Dimensions (HxWxD) w/ PGM ..... 109 x 23,5 x 116/131 mm  
 Protection degree ..... IP20

**Observed authority requirements:**  
 EMC ..... 2014/30/EU  
 LVD ..... 2014/35/EU  
 RoHS ..... 2011/65/EU

**Electrical specifications**  
 Temperature range ..... -20°C to +60°C  
 Storage temperature ..... -20°C to +85°C  
 Supply voltage, universal ..... 21,6..253 VAC, 50..60 Hz or 19,2..300 VDC

Max. required power:  
 IAMS002, IAMS0020 ..... ≤ 2,0 W  
 IAMS0022, AFCM0001 ..... ≤ 2,5 W  
 Max. power dissipation:  
 IAMS002, IAMS0020 ..... ≤ 2,0 W  
 IAMS0022, AFCM0001 ..... ≤ 2,5 W

Fuse ..... 400 mA SB / 250 VAC  
 Isolation voltage, test / operation ..... 2,3 kVAC / 250 VAC (reinforced isolation)  
 EMC immunity influence ..... < ±0,5% of span  
 Extended EMC immunity:  
 NAMUR NE Z1, A, criterion, burst. < ±1% of span  
 Conducted emission, class A (4184) ..... 150 kHz..10 MHz  
 Relative humidity ..... < 95% RH (non-cond.)  
 Dimensions (HxWxD) ..... 109 x 23,5 x 104 mm  
 Dimensions (HxWxD) w/ PGM ..... 109 x 23,5 x 116/131 mm  
 Protection degree ..... IP20

**Observed authority requirements:**  
 EMC ..... 2014/30/EU  
 LVD ..... 2014/35/EU  
 RoHS ..... 2011/65/EU

**Electrical specifications**  
 Temperature range ..... -20°C to +60°C  
 Storage temperature ..... -20°C to +85°C  
 Supply voltage, universal ..... 21,6..253 VAC, 50..60 Hz or 19,2..300 VDC

Max. required power:  
 IAMS002, IAMS0020 ..... ≤ 2,0 W  
 IAMS0022, AFCM0001 ..... ≤ 2,5 W  
 Max. power dissipation:  
 IAMS002, IAMS0020 ..... ≤ 2,0 W  
 IAMS0022, AFCM0001 ..... ≤ 2,5 W

Fuse ..... 400 mA SB / 250 VAC  
 Isolation voltage, test / operation ..... 2,3 kVAC / 250 VAC (reinforced isolation)  
 EMC immunity influence ..... < ±0,5% of span  
 Extended EMC immunity:  
 NAMUR NE Z1, A, criterion, burst. < ±1% of span  
 Conducted emission, class A (4184) ..... 150 kHz..10 MHz  
 Relative humidity ..... < 95% RH (non-cond.)  
 Dimensions (HxWxD) ..... 109 x 23,5 x 104 mm  
 Dimensions (HxWxD) w/ PGM ..... 109 x 23,5 x 116/131 mm  
 Protection degree ..... IP20

**Observed authority requirements:**  
 EMC ..... 2014/30/EU  
 LVD ..... 2014/35/EU  
 RoHS ..... 2011/65/EU

**Electrical specifications**  
 Temperature range ..... -20°C to +60°C  
 Storage temperature ..... -20°C to +85°C  
 Supply voltage, universal ..... 21,6..253 VAC, 50..60 Hz or 19,2..300 VDC

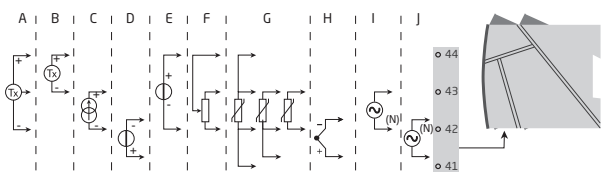
Max. required power:  
 IAMS002, IAMS0020 ..... ≤ 2,0 W  
 IAMS0022, AFCM0001 ..... ≤ 2,5 W  
 Max. power dissipation:  
 IAMS002, IAMS0020 ..... ≤ 2,0 W  
 IAMS0022, AFCM0001 ..... ≤ 2,5 W

Fuse ..... 400 mA SB / 250 VAC  
 Isolation voltage, test / operation ..... 2,3 kVAC / 250 VAC (reinforced isolation)  
 EMC immunity influence ..... < ±0,5% of span  
 Extended EMC immunity:  
 NAMUR NE Z1, A, criterion, burst. < ±1% of span  
 Conducted emission, class A (4184) ..... 150 kHz..10 MHz  
 Relative humidity ..... < 95% RH (non-cond.)  
 Dimensions (HxWxD) ..... 109 x 23,5 x 104 mm  
 Dimensions (HxWxD) w/ PGM ..... 109 x 23,5 x 116/131 mm  
 Protection degree ..... IP20

**Observed authority requirements:**  
 EMC ..... 2014/30/EU  
 LVD ..... 2014/35/EU  
 RoHS ..... 2011/65/EU

**Electrical specifications**  
 Temperature range ..... -20°C to +60°C  
 Storage temperature ..... -20°C to +85°C  
 Supply voltage, universal ..... 21,6..253 VAC, 50..60 Hz or 19,2..300 VDC

Max. required power:  
 IAMS002, IAMS0020 ..... ≤ 2,0 W



	DK	UK	FR	DE	IAMS	AFCM
A	3-tråds Tx	3-wire Tx	Tx 3-fils	3-Draht Tx		
B	2-tråds Tx	2-wire Tx	Tx 2-fils	2-Draht Tx	x	x
C	Strøm, DC	DC current	Courant cc	DC-Strom	x	x
D	Spænding, DC	DC voltage	Tension cc	DC-Spannung		
E	Spænding, DC	DC voltage	Tension cc	DC-Spannung	x	x
F	Potentiometer	Potentiometer	Potentiomètre	Potentiometer	x	x
G	RTD og lin. R	RTD and lin. R	RTD et R lin.	WTH und lin. R	x	x
H	TC	TC	TC	TE	x	x
I	Strøm, AC	AC current	Courant ca	AC-Strom		
J	Spænding, AC	AC voltage	Tension ca	AC-Spannung		

Typennr. Type no. No. de type Typennr.

**AFCM0001**

SN: YYZZZZZZZ

TAG: .....

Produktionsår fremgår af de to første cifre i serienummeret. Year of manufacture can be taken from the first two digits in the serial number. L'année de production est définie grace aux deux premiers chiffres du numéro de série. Die ersten beiden Ziffern der Seriennummer geben das Produktionsjahr an.

**red lion** Red Lion Controls - 20 Willow Springs Circle, York, PA 17406, USA - Phone +1 (717) 762-0511 sales@redlion.net www.redlion.net

-20°C ≤ T<sub>a</sub> ≤ +60°C

21: output	TTL	gnd.	31: supply	24-250VDC/105-10mA
22: output	gnd.		32:	
23: output	NPN	active output	33: supply	24-230VAC/10-40Hz/2.5W
24: output	PNP			

41: input	TC	V <sub>1</sub>	2w / 3w / 4w	pot.1	mA	loop
42: input	TC	V <sub>2</sub>	2w / 3w / 4w	pot.2	mA	loop
43: input	TC	V <sub>3</sub>	2w / 3w / 4w	pot.3	mA	loop
44: input	TC	V <sub>4</sub>	2w / 3w / 4w	pot.4	mA	loop

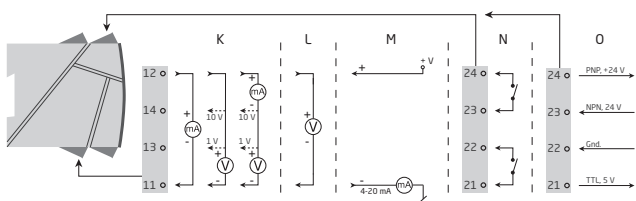
**Attention!** Read Manual before installation / operation. Lire manuel avant installation / operation. AFCM0001S1U01

Suitable for installation in Class I, Div 2 Group A-C T5 or Class I, Zone 2, Group HC T5

AFCM0001S1U01

Benforbindelser Pin connections Raccordement des bornes Klemmenanschluss

Godkendelser Approvals Homologations Zulassungen



	DK	UK	FR	DE	IAMS0002	IAMS0022	IAMS0020	AFCM0001
K	Strøm / spænding	Current / voltage	Courant / tension	Strom / Spannung	x	x		
L	Bufferet spænding	Buffered voltage	Tension direct	Gepufferter Spannung				
M	2-tråds strøm	2-wire current	Courant 2-fils	2-draht Strom				
N	Relæer	Relays	Relais	Relais		x	x	
O	Frekvens udgang	Frequency output	Sortie fréquence	Frequenz-ausgang				x

Part Name	Hazardous Substances					
	Lead (Pb)	Mercury (Hg)	Cadmium (Cd)	Hexavalent Chromium (Cr (VI))	Polybrominated biphenyls (PBB)	Polybrominated diphenyl ethers (PBDE)
Printed circuit board	X	0	0	0	0	0

This table is prepared in accordance with the provisions of SJ/T 11364  
 0: Indicates that said hazardous substance contained in all of the homogeneous materials for this part is below the limit requirement of GB/T 26572.  
 X: Indicates that said hazardous substance contained in at least one of the homogeneous materials used for this part is above the limit requirement of GB/T 26572.

The product's Environmentally Friendly Use Period (EFUP) is 50 years

